

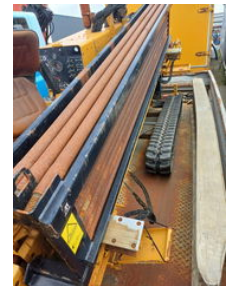
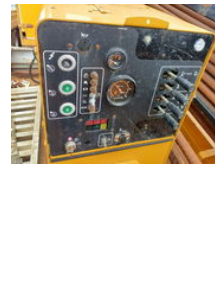


HOLLAND TR

Vermeer Navigator D16x220A

General features

Brand	Vermeer
Subcategory	Earth drill
Construction year	2000
Date of first registration	10-02-2001
operatingHours	1088
Condition	Used
General condition	Good
Fuel	Diesel
ceMarking	1



Characteristics

Empty weight

4.236kg

Vermeer Navigator D16x220A

Technical specifications

transportationPropulsion

tracking

Description

Vermeer Navigator Guided Drill Unit on trailer Type: Navigator D16X20A Year of construction 2000 Hour reading 1088 Engine: Perkins Machine can be taken over with trailer, possibly with towing vehicle. Daf 93-350 ATI Installation data. Bore rod length: 3.0 m Engine Perkins 700 series Fluid tank 208.5 L Fuel tank capacity 64 L Travel speed 2.4 km/h Height 220 cm Hydraulic tank capacity 87 L Connection diameter 48 mm Length 513 cm Maximum carriage speed 19.5 m/min Maximum flow 95 L/min Maximum pressure 52 bar Maximum speed 2600 RPM Maximum spindle speed 157 RPM Maximum spindle torque 2711 Nm Min. bending radius 30.1 m Min. bore diameter 8.9 cm Pipe diameter 4.8 cm Pulling force 7258 kg Thrust force 7258 kg Torque 2000 lb/ft Weight 4436 kg Trailer 2 axles air suspension, air brakes removal of superstructure by means of twist locks. aluminium ramps. complete drilling set, also possible to take over with towing vehicle. Daf 95-380 with Mixer unit.

Accessories