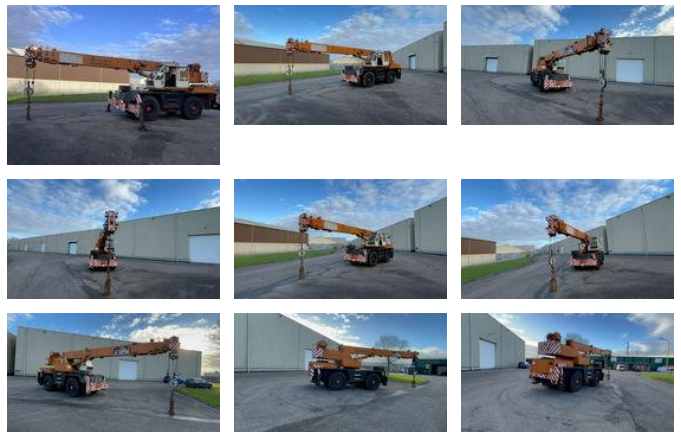




PPM Poclairn 2309 telescoopkraan

General features

Brand	PPM
Subcategory	Rough terrain
Construction year	1977
Hourmeter reading	12423
Condition	Used
General condition	Good
Fuel	Diesel



Characteristics

Empty weight	25.400kg
GWV	48.400kg
Lifting capacity	33.000kg
Mast type	Telescope

PPM Poclain 2309 telescoopkraan

Technical specifications

Drive	wheels
-------	--------

Engine output	160hp
---------------	-------

Description

Rough terrain telescopic crane Brand: PPM Type: 2309 Own weight: 25,400 kg max total: 48,000 kg lifting capacity 33,000 kg Mast length 29 meters 4 delig mast 2x telescoop uitschuifbaar tot 22 meter 1x handmatig 2x hoist block present. 1x single disk 1x three disk Engine: BF6L913 Transmission: 3-speed automatic Transport possible in consultation. prices depending on location.

Accessories