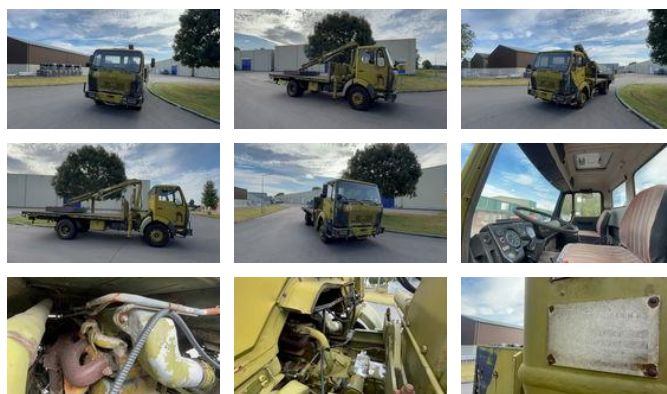




Mercedes-Benz NG NG 1213 Hiab 4x2

General features

Brand	Mercedes-Benz
Model	NG
Subcategory	Crane truck
Odometer reading	126.000km
Construction year	1980
Date of first registration	15-09-1980
Color	Green
Condition	Used
General condition	Good
Fuel	Diesel
Emission class	Euro 0



Characteristics

Empty weight	6.500kg
Load capacity	6.000kg
Lifting capacity	6.500kg

Mercedes-Benz NG NG 1213 Hiab 4x2

Technical specifications

Number of axes	2
Axis configuration	4x2
Engine output	130hp

Description

FORMER DANISH ARMY MERCEDES BENZ Type: NG 1213 4X2 HIAB CRANE 065 6.5 TON METER DETAILS SEE PHOTOS
Engine brakes and transmission in good condition. Tires in very poor condition.

Accessories