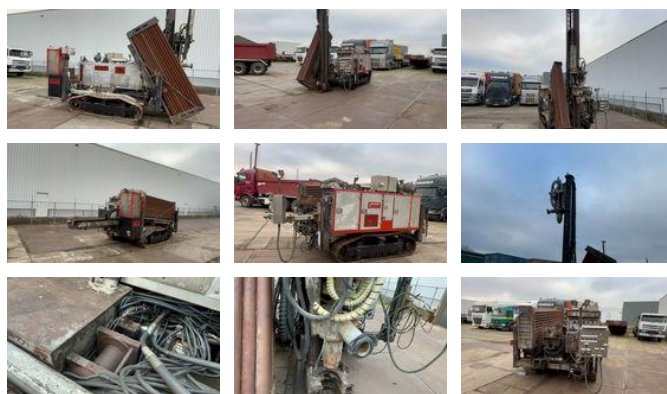




## Diversen Gemsa Gemrock Gemrock GDT 2005

### General features

Brand	Diversen
Subcategory	Earth drill
Construction year	2005
Hourmeter reading	8548
Color	Other
Condition	Used
General condition	Good
Fuel	Diesel



### Characteristics

Empty weight	10.000kg
GVW	25.000kg
Length	700cm
Width	2.200cm

# Diversen Gemsa Gemrock Gemrock GDT 2005

## Technical specifications

Drive

tracking

## Description

Horizontal/vertical combination drilling rig fully functional machine. Brand: GEMSA Type: GEMROCK GDT Year of construction: 2005 Hours read: 8550 Vertical drilling up to 280 meters similar Video link: <https://youtu.be/drBIXldsBxE> Drill motor: GEMSA MDH Gear ratio: 1:3 Hydraulic motor: Sauer Danfoss OMT 315 Max yield: Series 3000 NM 0 - 110 rpm / Parallel 6000 nm 0 - 55 rpm Threaded end: 2.3/8" API tube diameter 76 / 89 mm 3" - 3.1/2" Mast construction: Total length: 7000 mm Workable length: 3000 mm Max length 4000 mm Feed down: 60 meters/min Feed up: 32 meters / min Drawbar pull: 100 kn / 10,000 kg Tube cassette: left side Maximum capacity: 50 tubes, diameter 89 mm Working length: 3000 mm Drive: Engine: Deutz BF4M1012 turbo 140 hp Deutz Exchange engine Hydraulics: Sauer Danfoss PVG Dimensions and weights: Length: 7000 mm Width: 2200 mm Height: 2000 mm Empty weight: 9,200 kg Track: BERCO Track shoes: 400 mm Air line lubrication system Working pressure: 8 bar Capacity: 20 liters Maximum output pressure: 80 bar Hydraulically driven generator. GEMROCK GDT is well known for its high performance in terms of speed, reliability, and long life. Its creative design is based on proven and tried technology, which ensures continuous and uninterrupted operation, even in the harshest conditions. Suitable to adapt narrow environments. GDT Basic Facts: \* Structurally sound strong undercarriages and high strength heavy duty frame for optimal stability and endurance. \* Drilling from horizontal to vertical, 280m 918ft depth capacity with dia. 76 – 89 mm 3"- 3 ½" drill rods. \* Improved safety & work environment, secure drilling and tramming control with optionally multi-functional radio remote controller. \* Powerful, reliable and economical versatile diesel engine. Rating 103 kW 138 hp @ 2400 rpm. Low-emission engine, designed to minimize hydrocarbon spills, reduces the impact on the surrounding environment while lowering running costs. \* Powerful robust mast structure can be easily accessed and maintained. Operator has excellent accessibility for minor and major maintenance work. \* 100kN pull back capacity with speed 32m/min, fast feeding 60 m/min. \* Load-sensing hydraulics and a powerful rotary head GN 350 with up to 6,000 Nm of torque. \* Odex system. Eccentric drilling and casing. \* Fine control of drilling functions, greater flexibility with highly efficient hydraulics. All our offers can be viewed at Holland Trading Transport and Repair bv, Korte Venen 28, Steenwijk, 8331 TH. Opening hours: 8:30 AM to 5:00 PM and Saturdays: 9:00 AM to 1:00 PM. Reach us at +31.641883344 and +31.653862003 or email us at [info@holland-trading.com](mailto:info@holland-trading.com) We sell drilling machines for water drilling or geothermal energy, including the necessary equipment, trucks, low-loaders, semi-trailers, and refrigerated trailers, generators, etc. For questions and more details, email [www.holland-trading.com](mailto:www.holland-trading.com)

## Accessories