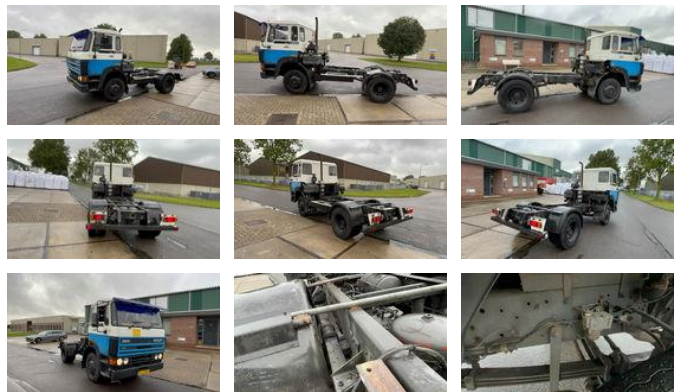




DAF 2500 Daf 2500 TI chassis

General features

Brand	DAF
Model	2500
Subcategory	Cab over engine
Licence plate	VJ28NP
Odometer reading	154.616km
Construction year	1990
Date of first registration	17-07-1990
Condition	Used
General condition	Good
Fuel	Diesel
Emission class	Euro 0



Characteristics

Empty weight	7.920kg
Load capacity	6.080kg
Max. weight	14.000kg
Width	250cm
Cabin	No

DAF 2500 Daf 2500 TI chassis

Technical specifications

Number of axes	2
Transmission	Manual
assets	116kw

Description

Truck Chassis can be used as a tractor Car is very neat inside and out. Brand: Daf Type: FA 2500 TI Version: 4x2 leaf springs
Transmission: ZF 6 Steering: RHD PTO: Yes present, no tank for PTO Year of construction 1990 Km reading: 154,616 km license
plate: Dutch registration video link: <https://youtu.be/qLSueSzR0Ag>

Accessories